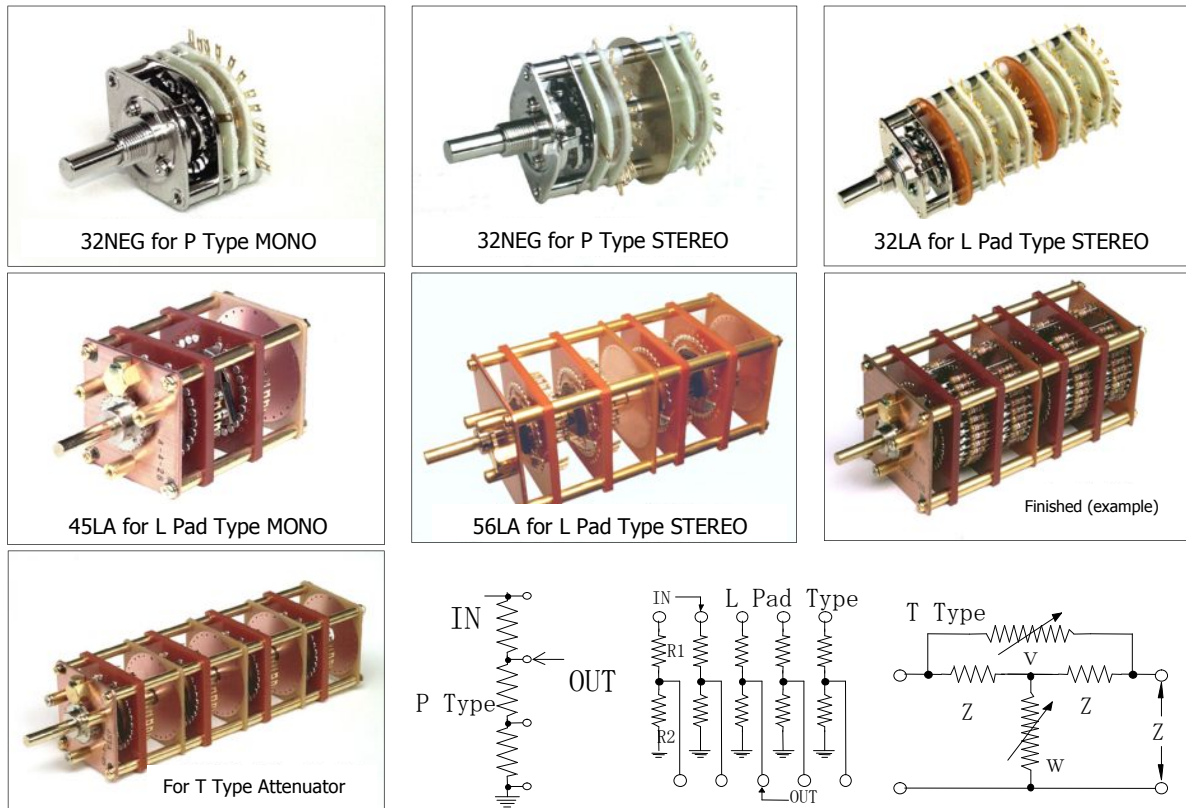


SEIDEN

Rotary Switches for Attenuators

A wide range of rotary switches is available to fit into many attenuators including P type, L Pad type and T type for high-quality sound with your favorite resistors.



	Item No	for MONO	Item No	for STEREO
For P Type	Nº32001	32NEG 1-1-23 15°	Nº32013	32NEG 2-2-23 15° W/ S
	Nº43001	43NEG 1-1-23 15°	Nº43007	43NEG 2-2-23 15° W/ S
	Nº45003	45SG 1-1-28 12°	Nº45009	45SG 2-2-28 12°
	Nº56002	56SG 1-1-34 10°	Nº56006	56SG 2-2-34 10°
For L Pad Type	NºLA117	32LA 2-2-23 15°	NºLA118	32LA 4-4-23 15°
	NºLA133	32LAC 2-2-23 15°	NºLA134	32LAC 4-4-23 15°
	NºLA121	45LA 2-2-23 15°	NºLA122	45LA 4-4-23 15°
	NºLA123	45LA 2-2-28 12°	NºLA124	45LA 4-4-28 12°
	NºLA127	56LA 2-2-34 10°	NºLA128	56LA 4-4-34 10°
	NºLA135	56LA 2-2-23 15°	NºLA136	56LA 4-4-23 15°
		(For 3W wire-wound resistors)		(For 3W wire-wound resistors)
For T Type	NºTA001	45TA 2-2-23 15°	NºTA002	45TA 4-4-23 15°
	NºTA003	45TA 2-2-28 12°	NºTA004	45TA 4-4-28 12°
	NºTA005	56TA 2-2-34 10°	NºTA006	56TA 4-4-34 10°

- 1) 32LA and 32NEG types can accommodate 1/4W resistors. The others can accommodate 1/2W resistors.
- 2) LA type is designed to be fit with resistors easily for making L Pad type attenuator.
- 3) L Pad attenuator may make "fizz" noise when switching due to its circuit characteristics.
Noise reduction measures are taken for all the rotary switches except the 32 and 43 types.

SEIDEN

56SGP TYPE

56SGP type maintains the performance of SG type but has a larger current capacity. This type is suitable for attenuators for level adjustment of loudspeaker network, etc. Custom-designed switches are available.

<Rating> 56SGP Type

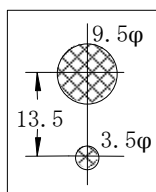
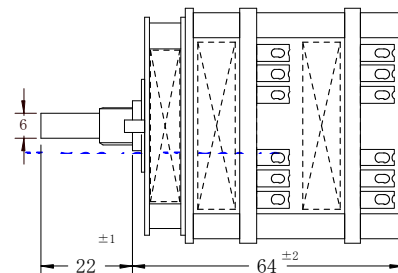
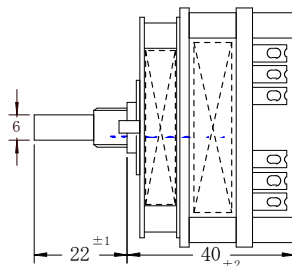
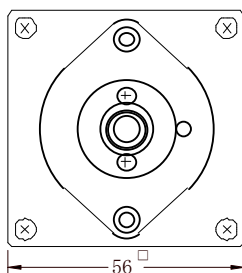
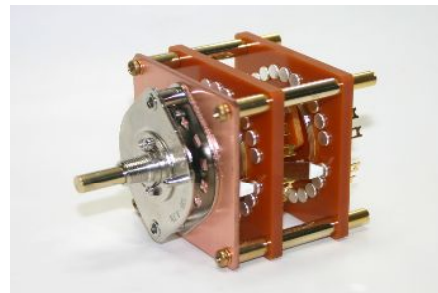
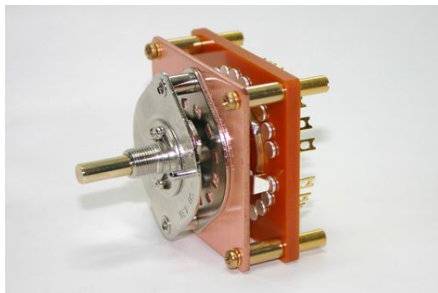
Allowable Voltage: DC250V	Withstand Voltage: DC 1000V 1min	Dielectric Resistance: 1000MΩ or over
Allowable Current: DC5A (under 100V)	Rotary Torque: 0.5~1.5Kg	Durability: Over 50000 times (no load)
Contact Resistance: 5mΩ or under	Circuit Resistance: 10mΩ or under	Allowable Temp.: -20°C~+70°C

N^o56041 56SGP 1-stage 2-circuit 2~6-contact 30° OFF (MONO BOTH-OFF, STEREO ONE-SIDE-OFF)

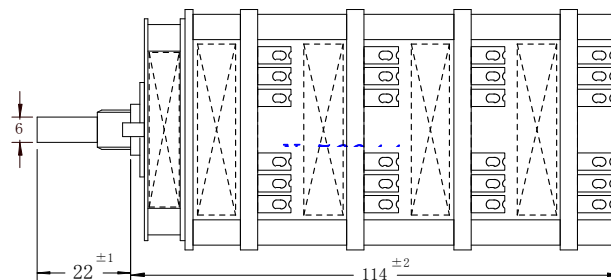
N^o56042 56SGP 2-stage 4-circuit 2~6-contact 30° OFF (STEREO BOTH-OFF)

N^o56043 56SGP 2-stage 2-circuit 2~12-contact 30° OFF (MONO BOTH-OFF, STEREO ONE-SIDE-OFF, ATTENUATOR)

N^o56044 56SGP 4-stage 4-circuit 2~12-contact 30° OFF (MONO BOTH-OFF, STEREO ONE-SIDE-OFF, ATTENUATOR)



Panel Mounting Holes



© Switching timing is OFF (non-shorting) but this type can also be used as ON type by wiring the adjacent lug as a pair.

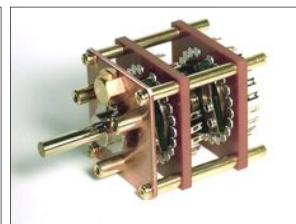
SEIDEN

SG TYPE

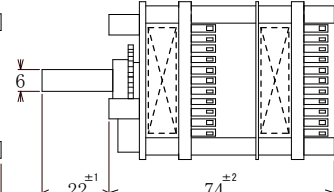
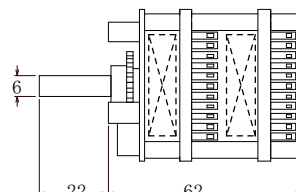
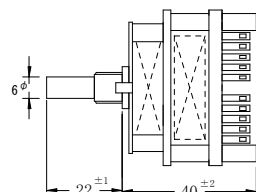
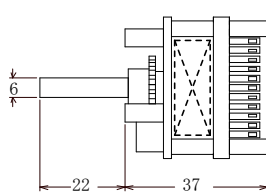
45SG, 56SG, 62SG and 74SG types are designed for high-quality sound and high reliability and use copper for the frame and Ag for the contacts and brush to minimize the use of magnetic metals. Excellent stability of contact resistance and feeling of switching are achieved. This series offers a superb and high-quality finished multi-contact type switches in both appearance and performance. The combination of selector switch and attenuator of the SG series is the best choice for high-end preamplifiers. Custom-designed switches are available to accommodate large wire-wound resistors, etc.

<Rating> 45SG, 65SG, 62SG, 74SG

Allowable Voltage: DC200V (under 1A)	Withstand Voltage: DC 500V 1min	Dielectric Resistance: 1000MΩ or over
Allowable Current: DC5A (under 10V)	Rotary Torque: 0.5~1.5Kg	Durability: Over 50000 times (no load)
Contact Resistance: 5mΩ or under	Allowable Temp.: -20°C~+70°C	

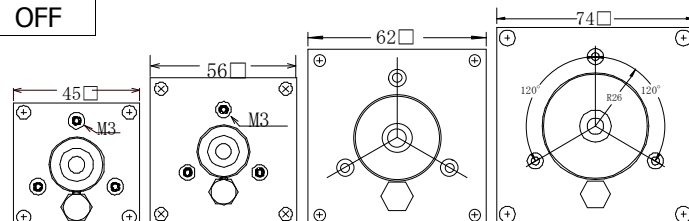
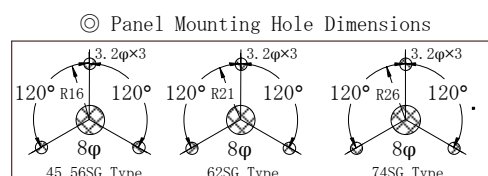


45SG 2-2-23 W/ S



Item No	Stage-Circuit	No. of Contacts	Angle	Timing
45002	1-1-	2~23	15°	ON
45003	1-1-	2~28	12°	ON
45006	1-2-	2~6	30°	OFF
45008	2-2-	2~23	15°	ON
45009	2-2-	2~28	12°	ON
45012	2-4-	2~6	30°	OFF
56002	1-1-	2~34	10°	ON
56006	2-2-	2~34	10°	ON
56018	4-4-	2~34	10°	ON
56041	1-2-	2~6	30°	OFF
56042	2-4-	2~6	30°	OFF

Item No	Stage-Circuit	No. of Contacts	Angle	Timing
62001	1-1-	2~43	8°	ON
62002	1-1-	2~46	7.5°	ON
62004	2-2-	2~43	8°	ON
62005	2-2-	2~46	7.5°	ON
62013	4-4-	2~43	8°	ON
62014	4-4-	2~46	7.5°	ON
74001	1-1-	2~58	6°	ON
74002	2-2-	2~58	6°	ON
74005	4-4-	2~58	6°	ON



- © There are two kinds of switching timing, ON (shorting) and OFF (non-shorting).
30° OFF type can also be used as ON type by wiring the adjacent lug as a pair.
- © The number of contacts are fixed. Specify the number of contacts when ordering.

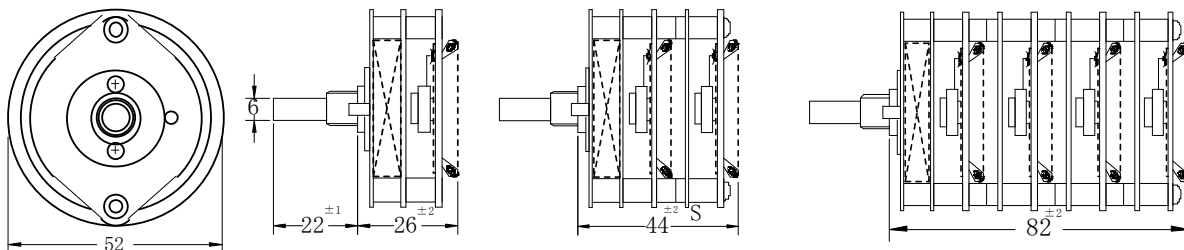
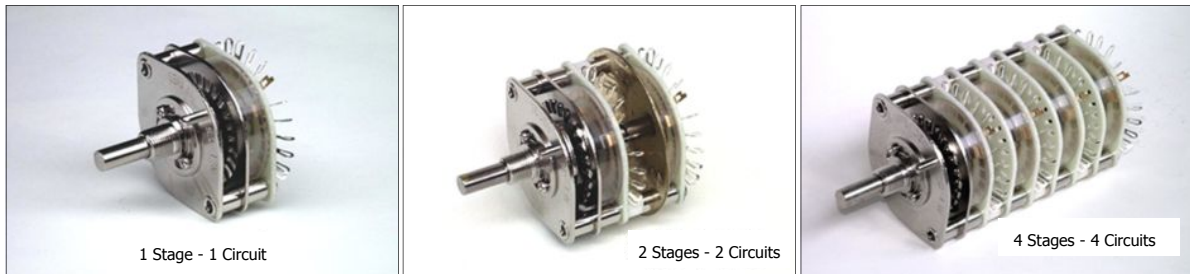
SEIDEN

43NEG TYPE

43NEG type rotary switch for audio is made one size larger than 32NEG type and is designed for high-quality sound and high reliability. The contacts are gold plated with Ag base and excellent stability of contact resistance and feeling of switching are achieved. This series is convenient for use as attenuators with 1/2W resistors besides selector switches. The number of contacts is adjustable after purchase by loosening the stopper screws.

<Rating>

Allowable Voltage: DC200V (under 0.2A)	Withstand Voltage: DC 500V 1min	Dielectric Resistance: 1000MΩ or over
Allowable Current: DC3A (under 10V)	Rotary Torque: 0.5~1.5Kg	Durability: Over 50000 times (no load)
Contact Resistance: 5mΩ or under	Allowable Temp.: -20°C~+70°C	



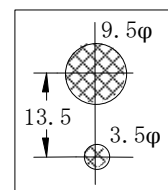
For Attenuators

For Selectors

Item №	Stage-Circuit	No. of Contacts	Angle	Timing
43001	1-1-	2~23	15°	ON
43007	2-2-	2~23	15°	ON
43013	3-3-	2~23	15°	ON
43017	4-4-	2~23	15°	ON
43027	6-6-	2~23	15°	ON

Item №	Stage-Circuit	No. of Contacts	Angle	Timing
43004	1-2-	2~6	30°	OFF
43005	1-4-	2~5	15°	ON
43006	1-4-	2~3	30°	OFF
43009	2-4-	2~11	15°	ON
43010	2-4-	2~6	30°	OFF

- ◎ The number of contacts is adjustable after purchase by loosening the stopper screws.
- ◎ There are two kinds of switching timing, ON (shorting) and OFF (non-shorting).
30° OFF type can also be used as ON type by wiring the adjacent lug as a pair.
- ◎ Besides the above, we have other various types up to 6 stages for your application.
We also have multi-contact type SD-45SG, 56SG, 62SG and 74SG.
Please consult with us for custom-designed switches (dimensions and shield between the stages, etc).



Panel Mounting Holes

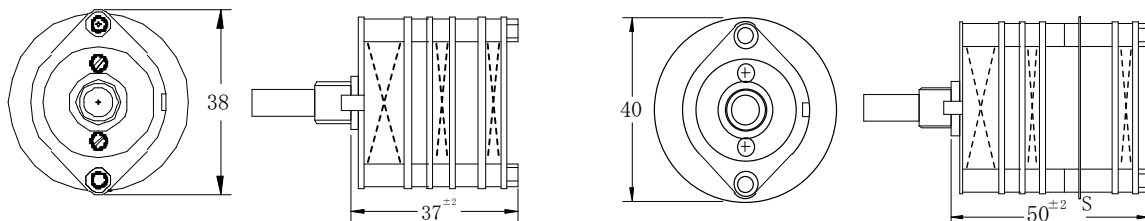
SEIDEN

32NEG TYPE

32NEG type is designed for high-quality sound and high reliability. The contacts are gold plated with Ag base and excellent stability of contact resistance and feeling of switching are achieved. This series is made comparatively small and the attenuator in combination with 1/4W resistors can easily replace the conventional carbon VR. The combination of selector switch and attenuator of this series is suitable for thin-case preamplifiers. Also, the number of contacts is adjustable and in combination with precision resistors, the 32NEG can be used for many applications such as level adjustment for channel dividers, input level adjustment for power amplifiers, etc.

<Rating>

Allowable Voltage: DC200V (under 0.1A)	Withstand Voltage: DC 500V 1min	Dielectric Resistance: 1000MΩ or over
Allowable Current: DC2A (under 10V)	Rotary Torque: 0.5~1.5Kg	Durability: Over 50000 times (no load)
Contact Resistance: 5mΩ or under	Allowable Temp.: -20°C~+70°C	



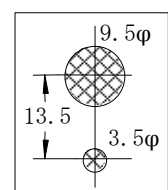
For Attenuators

For Selectors

Item No	Stage-Circuit	No. of Contacts	Angle	Timing
32001	1-1-	2~23	15°	ON
32002	1-1-	2~12	30°	ON
32007	2-2-	2~23	15°	ON
32008	2-2-	2~12	30°	ON
32025	4-4-	2~23	15°	ON
32026	4-4-	2~12	30°	ON
32040	6-6-	2~23	15°	ON
32041	6-6-	2~12	30°	ON

Item No	Stage-Circuit	No. of Contacts	Angle	Timing
32005	1-2-	2~6	30°	ON
32006	1-2-	2~6	30°	OFF
32008	2-2-	2~12	30°	ON
32009	2-2-	2~12	30°	OFF
32011	2-4-	2~6	30°	ON
32012	2-4-	2~6	30°	OFF
32044	1-4-	2~3	30°	ON
32045	1-4-	2~3	30°	OFF

- ◎ The number of contacts is adjustable after purchase by loosening the stopper screws.
- ◎ There are two kinds of switching timing, ON (shorting) and OFF (non-shorting).
30° OFF type can also be used as ON type by wiring the adjacent lug as a pair.
- ◎ Besides the above, we have other various types up to 6 stages for your application.
We also have multi-contact type SD-45SG, 56SG, 62SG and 74SG.
Please consult with us for custom-designed switches (dimensions and shield between the stages, etc).



Panel Mounting Holes